



The 2007 Truckee Meadows Regional Plan

FACT SHEET

OVERVIEW

The 2007 Truckee Meadows Regional Plan (Regional Plan) provides a blueprint for development in the southern 25 percent of Washoe County over the next 20 years. The Regional Plan directs where growth will occur, including which areas will be development constrained, what the priorities are for infrastructure development, and how our natural resources should be managed. The plan also coordinates provision of services and capital improvements from the local governments and affected entities in the region.

HOW WAS THE 2007 REGIONAL PLAN UPDATE COMPLETED?

Prior to the initiation of the plan update process in 2005, the Regional Planning Commission met with key elected and appointed officials and staff members from around the region to solicit their views on the direction for development in the region and the desired outcomes from the 2007 Regional Plan update. Once the planning process began, the Regional Planning Commission formed a 22 member Technical Advisory Committee (TAC) comprised of staff from entities and organizations from many disciplines in the region to review and propose revisions to the Plan.

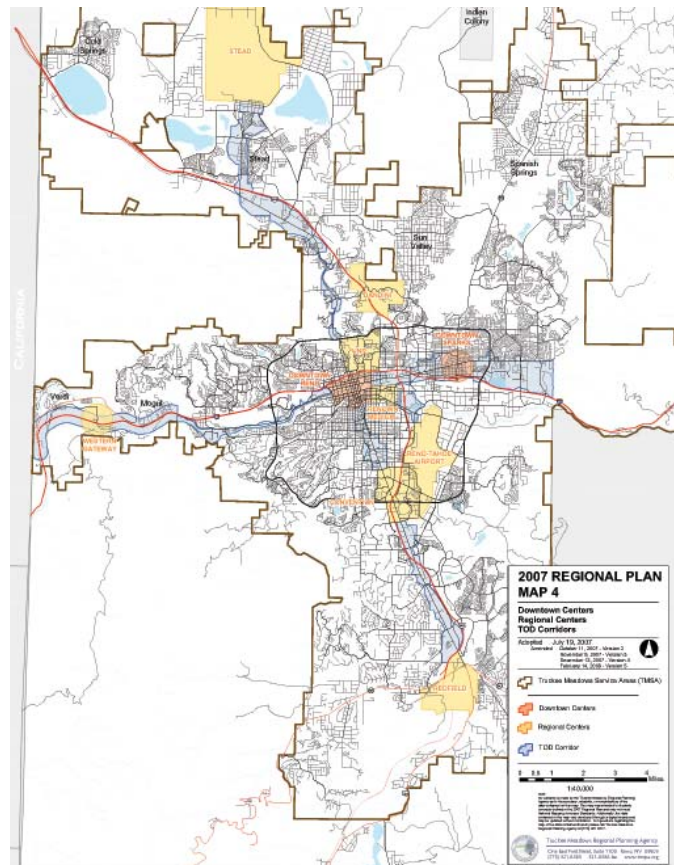
Over 50 public meetings were held throughout the region between 2005 and 2007 to allow full and complete public input and comment on the development of the 2007 Truckee Meadows Regional Plan. The Regional Planning Governing Board adopted the 2007 Regional Plan in July of 2007.

AIMS OF THE 2007 REGIONAL PLAN

- In broad terms, the Regional Plan aims to:
- Minimize sprawl by directing growth to the core of the region, promoting infill strategies, and promoting transit oriented development;
 - Optimize capital investment and maintenance costs for

infrastructure;

- Constrain development on areas such as playas, wetlands, and slopes over 30% (steep slopes) and require local governments to prepare and maintain management plans for development on hillsides;
- Coordinate future development with availability of services, facilities and natural resources to support that development; and
- Promote cooperation among local governments and affected entities within the region.



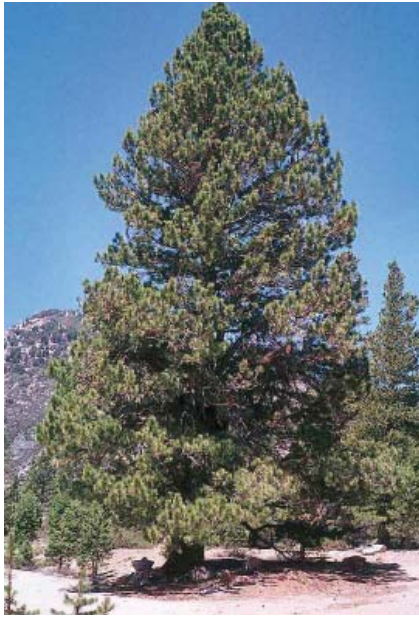
2007 Truckee Meadows Regional Plan Map 4

KEY ELEMENTS OF THE 2007 REGIONAL PLAN

The following is a summary of the key elements of the Regional Plan:

Fundamental Assumptions:

Washoe County's population in 2005 was just under 400,000 people. The State Demographer estimates the population of Washoe County will be in excess of 575,000 people by 2025. In addition, U.S. Census Bureau population projections (1995 – 2025) identify increasing cultural diversity, a net decrease in the percent of population under the age of 20 and a continued aging of the baby boomers. The decrease in the working group will result in a greater proportion of retired senior citizens in our region.



Washoe Pine

Regional Form and Pattern:

To accommodate the expanding population base and minimize sprawl, the Regional Plan proposes a compact development pattern that encourages infill development and the intensification of downtown and regional centers and along transit corridors. The Regional Plan identifies the areas that should receive municipal services

over the next 20 years, and identifies the priority that should be assigned to the provision of infrastructure and services.

The Regional Plan promotes a development pattern in specified areas that will promote the use of bus rapid transit and bicycles, and encourage a more pedestrian friendly environment to alleviate a growing demand on the automobile.

The Regional Plan encourages a range of lifestyle options from a more urbanized core to a lower density fringe. Residents will have a range of choices from condominiums along a transit corridor to ranchettes on five acres.

Natural Resource Management:

The Regional Plan identifies areas that should not be developed including steep slopes, sensitive areas such as wetlands, water bodies, and ridgelines. In addition, the Regional Plan requires local governments to develop management strategies for hillside development.

The Regional Plan also requires affected entities and regional entities to develop plans to manage our air quality, water quality and quantity, open space, greenways, and other natural features. Local government master plans are required to at least address the management of such things as wildlife migration paths, habitat for wildlife and vegetation, and trail networks.

Infrastructure Provision:

The Regional Plan calls for infrastructure providers to develop facilities plans and capital improvement programs to ensure that regional development priorities are met. Local governments and affected entities must ensure that necessary public facilities and services to support new development are or will be available and adequate, based on adopted levels of services (LOS) at the time impacts of new development occur.

Both the Regional Transportation Commission and the Western Regional Water Commission are required to submit their plans for conformance or consistency review against the Regional Plan.

Implementation of the Plan:

The Regional Plan requires all local governments and affected entities to update their master plans, facilities plans and any other similar plans to bring them in-line with the updated Regional Plan. Once the plans are updated, each entity must submit them to the Regional Planning Commission to be reviewed for conformance with the Regional Plan. The implementation section of the Regional Plan also outlines policies for amending the regional plan, annual reporting, and the creation and management of joint plans.

FOR MORE INFORMATION ON THIS TOPIC CONTACT:



Truckee Meadows Regional Planning Agency
One East First Street, Suite 1100
Reno, NV 89501
Phone: 775.321.8385
Email: Input@tmrpa.org
Website: www.tmrpa.org